

# 163-19 Jamaica Avenue

Queens, NY

**10,555 SF AVAILABLE**  
with **48'** of Frontage

5,295 SF Grade  
5,260 SF Cellar



165<sup>th</sup> Street

BANK OF AMERICA

FOOT LOCKER  
CLAIRE'S  
AT&T  
V.I.M.

164<sup>th</sup> Street

MODELL'S  
PORTA BELLA

DR. JAY'S  
**\*SITE\***  
STRAWBERRY  
ZALES  
FABCO SHOES

163<sup>th</sup> Street

SPORTS JAM  
BLINK FITNESS  
T-MOBILE

SHOPPER'S  
WORLD  
YOUNGWORLD  
PAYLESS  
METRO PCS

162<sup>th</sup> Street

KIDS FOOT  
LOCKER  
CHILDREN'S  
PLACE  
CHASE BANK

VERIZON  
APPLEBEE'S  
GNC  
CAPITAL ONE

FOR MORE INFORMATION, CONTACT:

Isaac Mograby | 212.292.0214 | imograby@crtl.com

Jack Chera | 212.292.0211 | jchera@crtl.com

**CROWN RETAIL SERVICES**

767 5<sup>TH</sup> AVENUE, 24<sup>TH</sup> FL

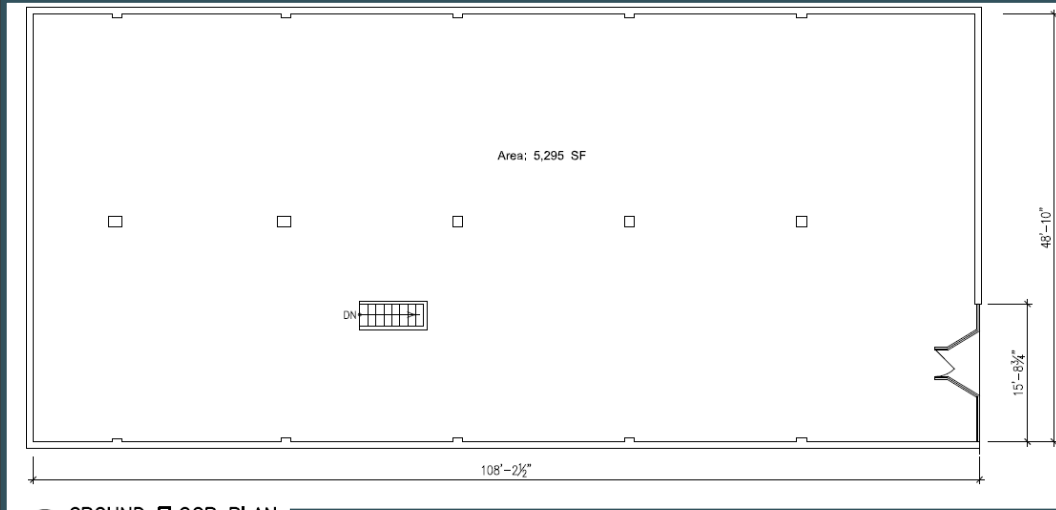
NEW YORK, NY 10153



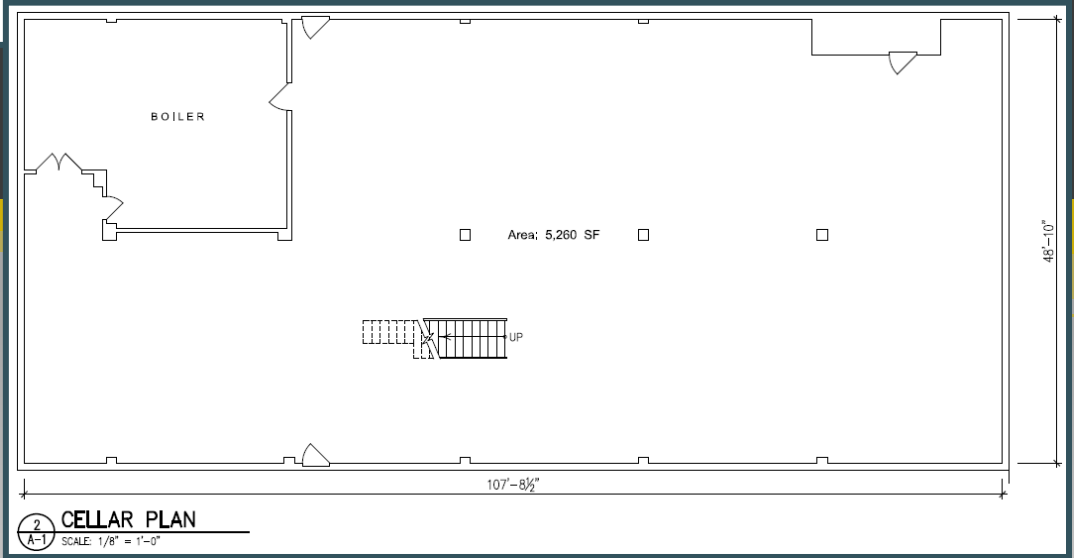
# 163-19 Jamaica Avenue

Queens, NY

## FLOOR PLANS



1 GROUND FLOOR PLAN  
SCALE: 1/8" = 1'-0"



2 CELLAR PLAN  
SCALE: 1/8" = 1'-0"

FOR MORE INFORMATION, CONTACT:

Isaac Mograby | 212.292.0214 | imograby@crtl.com

Jack Chera | 212.292.0211 | jchera@crtl.com

**CROWN RETAIL SERVICES**

767 5<sup>TH</sup> AVENUE, 24<sup>TH</sup> FL

NEW YORK, NY 10153

